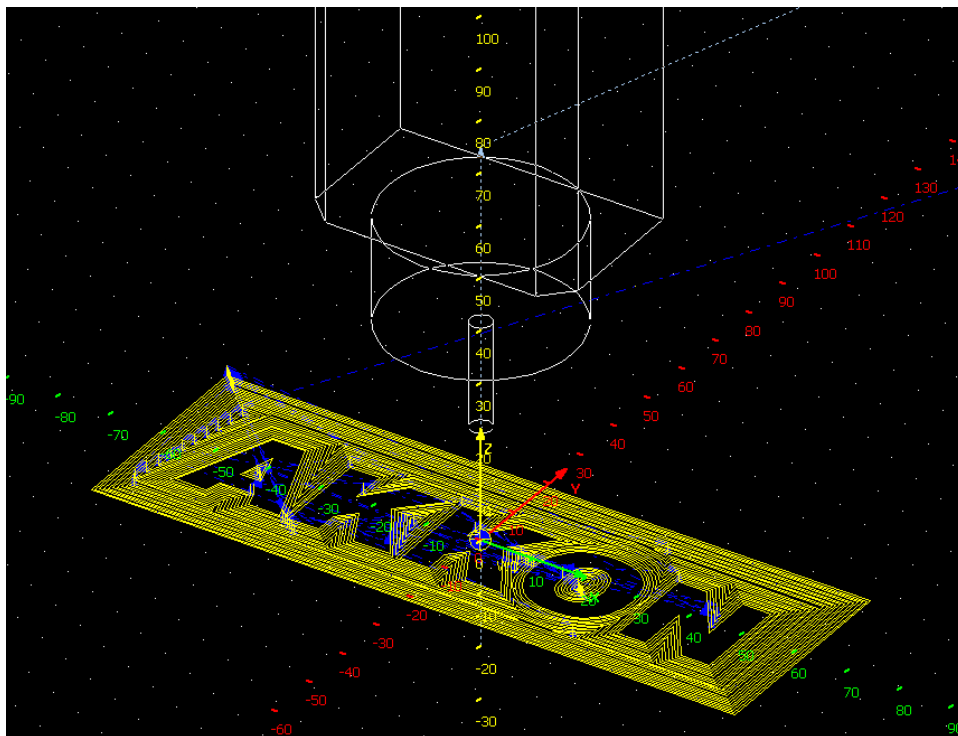


TN019

AKKON CNC SYSTEM

Tutorial Using CorelDRAW with AKKONDesk



Authors: Gerhard Burger
 Version: 1.0
 Last update: 08.07.2009
 File: TN019_Using_CorelDraw_with_AKKONDesk
 Attachments: no attachments

Table of versions

Version	Date	Remarks
1.0	09.07.2009	first version

Table of versions 1

1 INTRODUCTION 3

2 G-CODE CREATION USING CORELDRAW 4

2.1 Step 1: Create graphics 4

2.2 Step 2: Export graphics in HPGL-file format..... 6

2.3 Step 3: Run AkkonDesk and press toolbar import HPGL-File and open HPGL-file..... 7

2.4 Step 4: Set appropriate parameters of the converter and generate DIN-G-Code 8

2.5 Step 5: Process G-code 8

3 DISCLAIMER 10

3.1 Limited Warranty and Disclaimer of Warranty.....10

3.2 ACKNOWLEDGMENT10

1 Introduction

This document describes how to use CorelDRAW for creation of graphics that can be imported to AkkonDesk converted to DIN G-Code and executed using the Akkon CNC controller or Akkon Simulator. CorelDRAW™¹ is an inexpensive and powerful software for graphics design. The program can also be used for precise drawing of vector graphics.

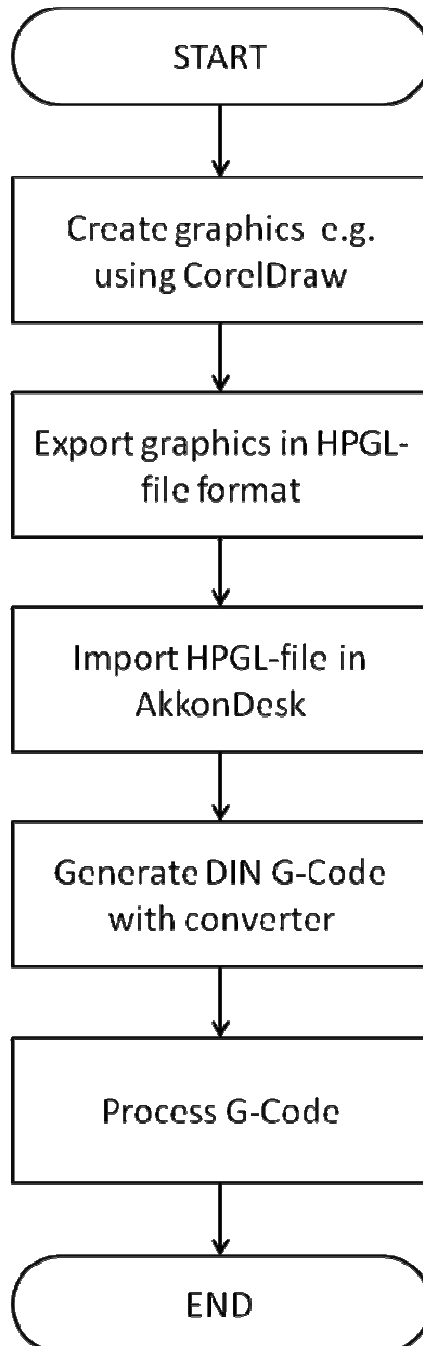


Figure 1: Design flow for graphics processing using CorelDRAW with AkkonDesk.

¹ CorelDRAW is a Trademark of Corel Corporation

2 G-Code creation using CoreIDRAW

2.1 Step 1: Create graphics

Start CoreIDRAW and create new drawing layer and rename it e.g. as layer “Contour”.

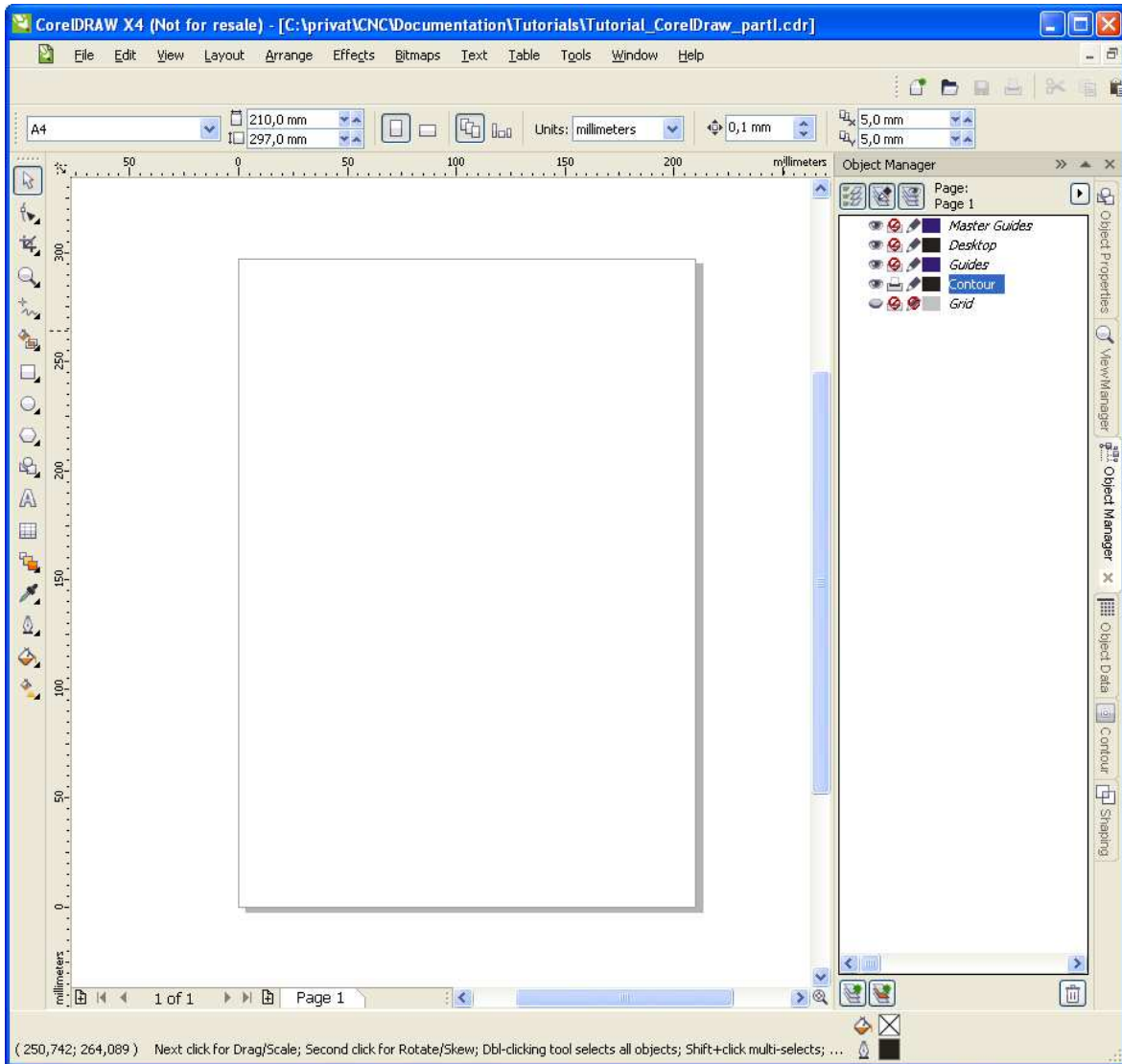


Figure 1: Design flow for graphics processing using CoreIDRAW with AkkonDesk.

Depending on the used version, a new drawing layer can be added by moving the mouse inside the object manager window, press right mouse button and select “New layer”. This step is not absolutely necessary if a standard layer is used but further processing of graphics can be simplified if the layer concept is. E.g. an auxiliary layer can be locked or hidden and excluded by the file export filter.

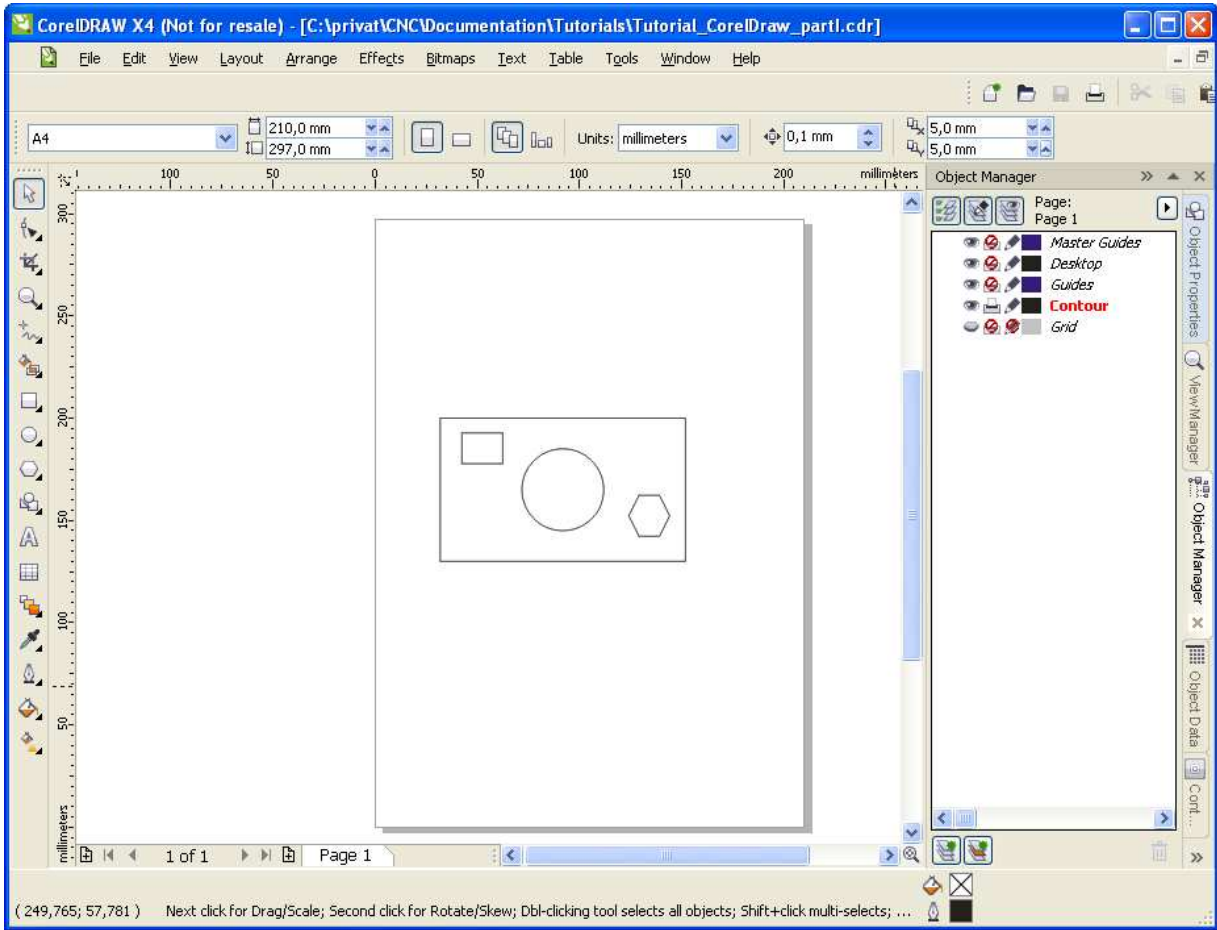


Figure 2: Draw in CoreDraw

Pull a vertical and a horizontal guide line using to the center of the sheet. On an A4-page the center is on $x = 105$ mm and $y = 148,5$ mm. CoreDRAW also have a menu button or shortkey ("P") for that operation. This center will later be the center of the coordinates that will be used by the output filter. Also move your graphics to the center of the sheet (figure 3).

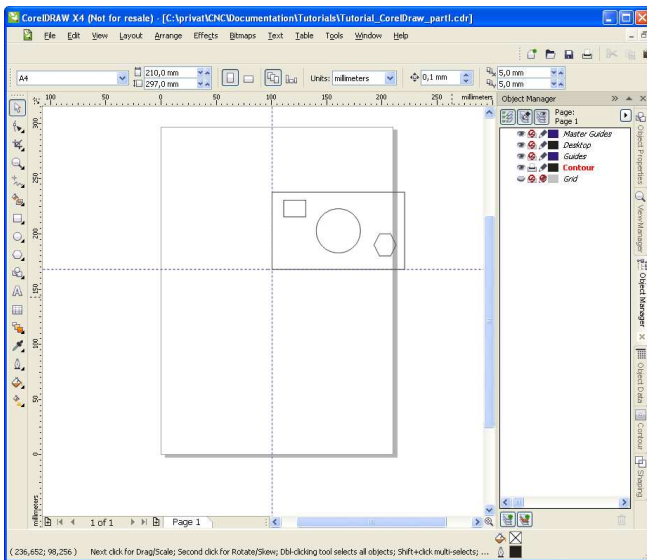


Figure 3: Aligned graphics to page

2.2 Step 2: Export graphics in HPGL-file format

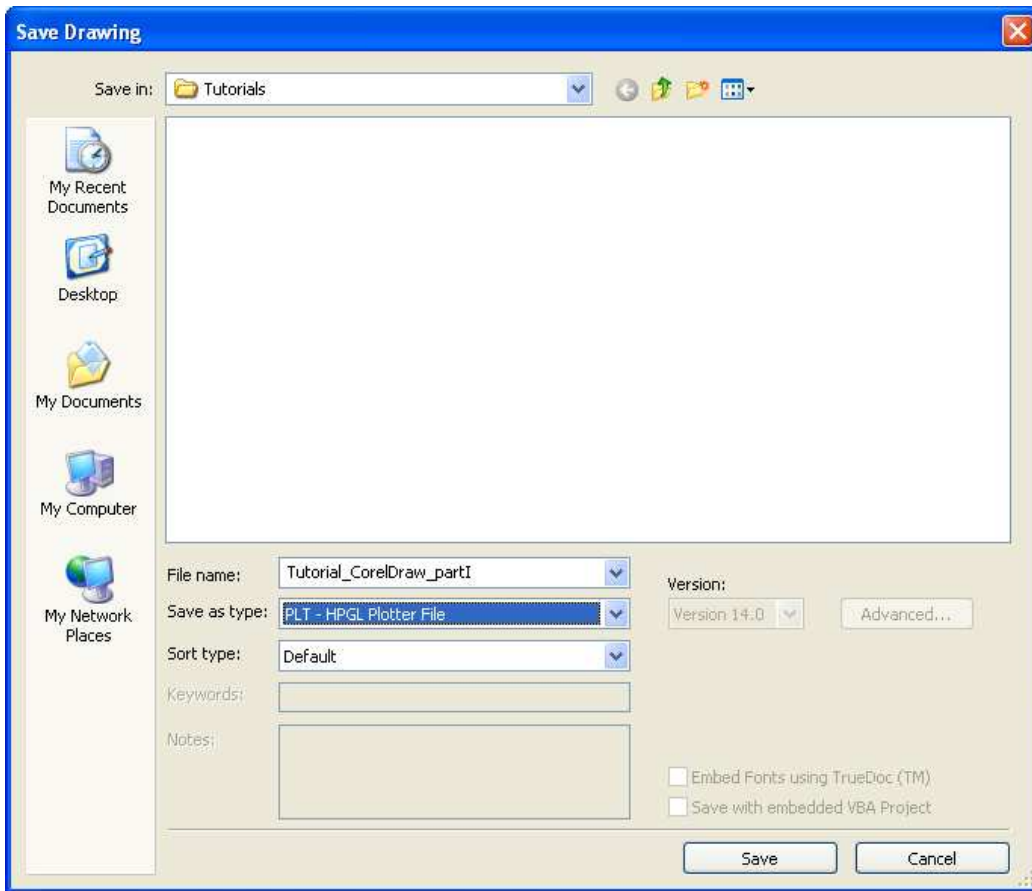


Figure 4: Save output dialog for HPGL-file export

Press save and set filed "Plotter Origin" to page center and press OK (figure 5).

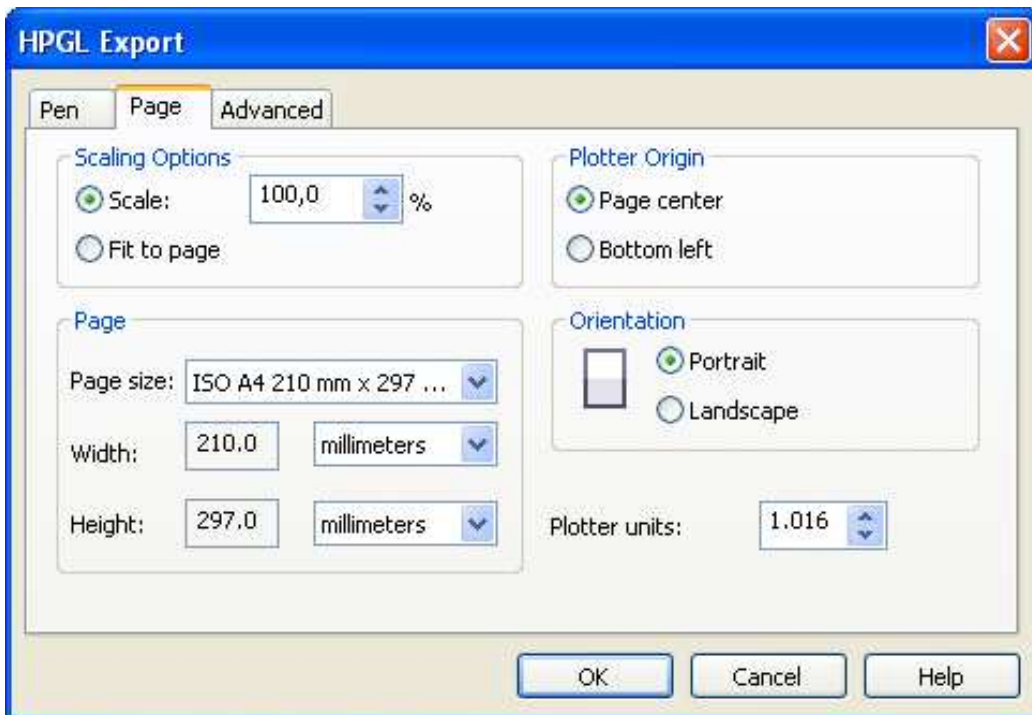
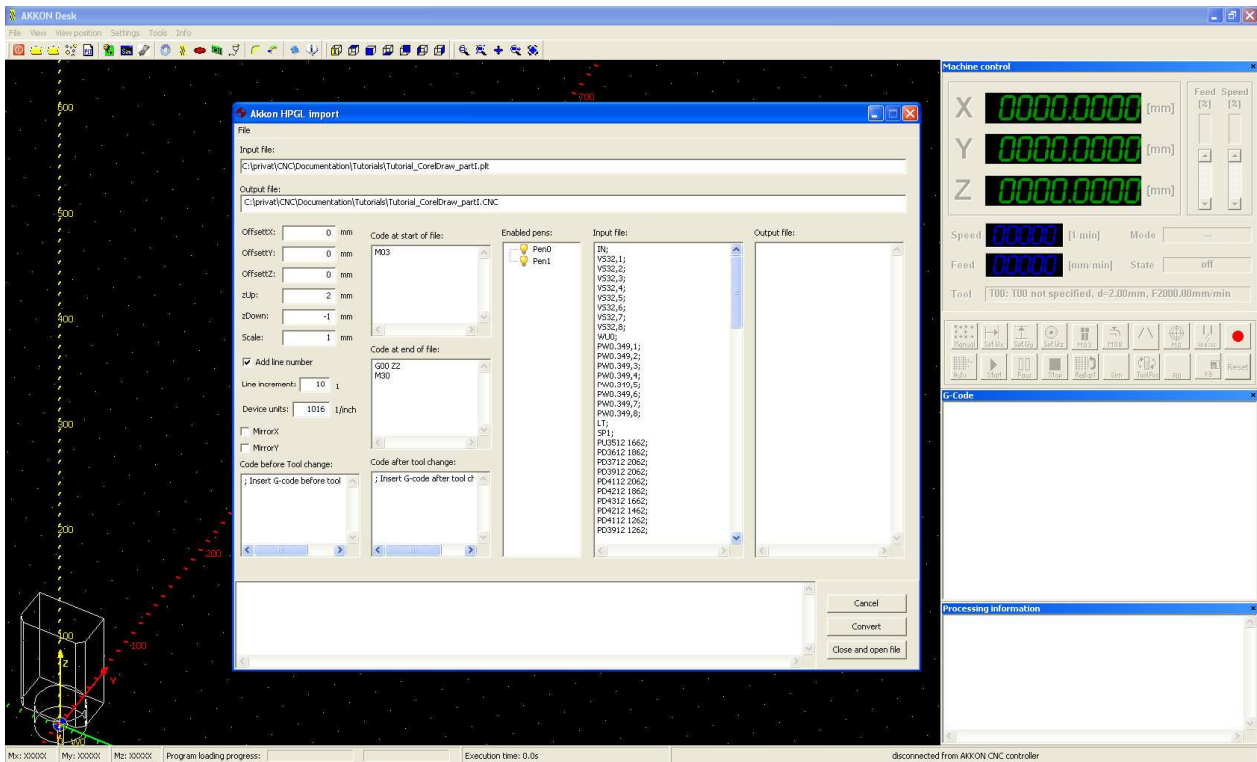
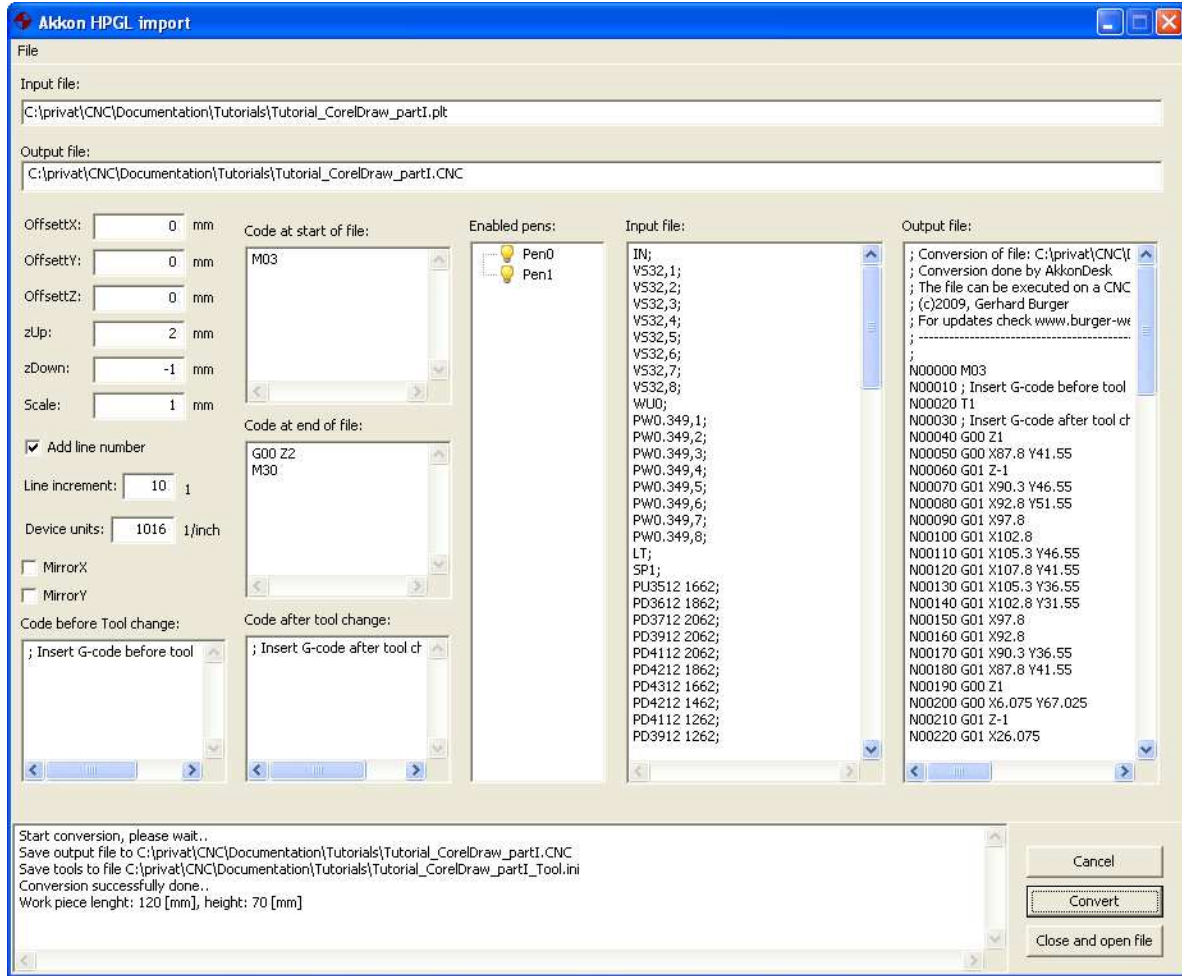


Figure 5: Output parameters for HPGL - file export

2.3 Step 3: Run AkkonDesk and press toolbar import HPGL-File and open HPGL-file



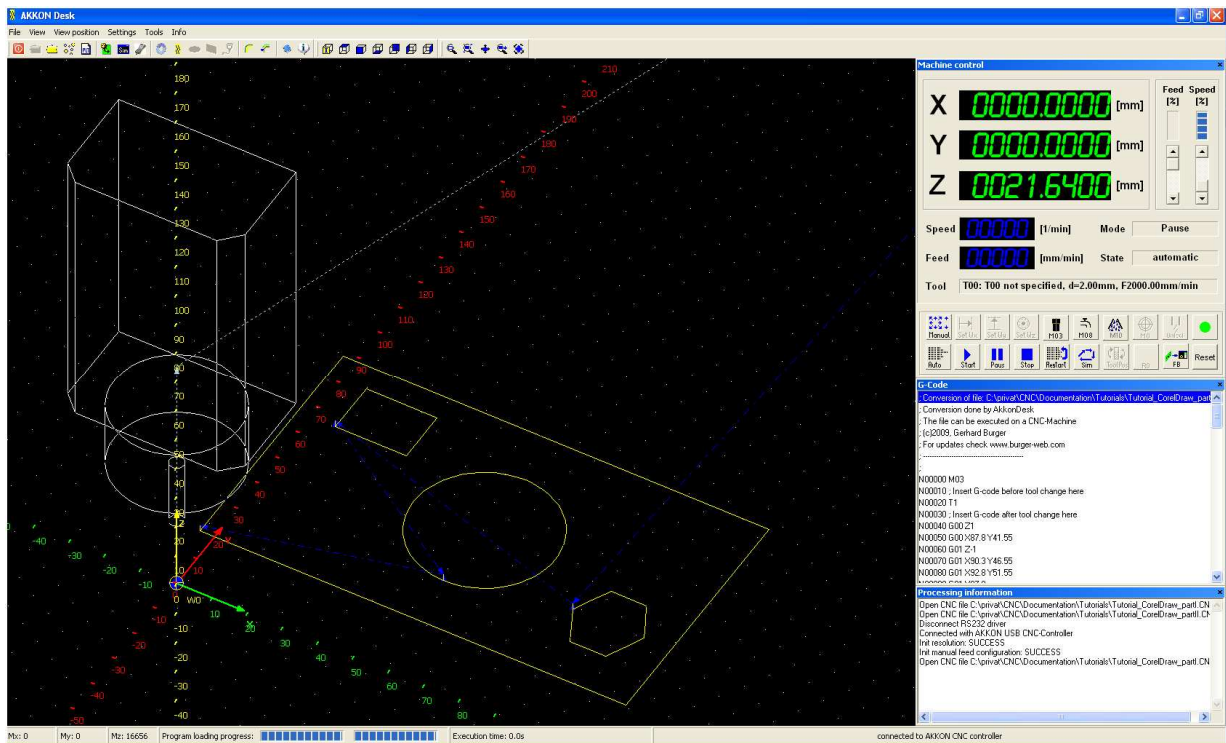
2.4 Step 4: Set appropriate parameters of the converter and generate DIN-G-Code



Press button "Close and open" to open G-Code file in AKKON

2.5 Step 5: Process G-code

Run the program using the AKKON controller board. If no AKKON Controller board is available, then the program can also be executed using the AKKON Simulator. For that case, please see TN017 (TN017_Setup_Akkon_Simulator.pdf)



ENJOY

3 Disclaimer

3.1 *Limited Warranty and Disclaimer of Warranty*

THIS SOFTWARE AND ACCOMPANYING WRITTEN MATERIALS (INCLUDING INSTRUCTIONS FOR USE) ARE PROVIDED "AS IS" WITHOUT WARRANTY OF ANY KIND. FURTHER, the author DOES NOT WARRANT, GUARANTEE, OR MAKE ANY REPRESENTATIONS REGARDING THE USE, OR THE RESULTS OF USE, OF THE SOFTWARE OR WRITTEN MATERIALS IN TERMS OF CORRECTNESS, ACCURACY, RELIABILITY, CURRENTNESS, OR OTHERWISE. THE ENTIRE RISK AS TO THE RESULTS AND PERFORMANCE OF THE SOFTWARE IS ASSUMED BY YOU. IF THE SOFTWARE OR WRITTEN MATERIALS ARE DEFECTIVE YOU, AND NOT the author OR ITS DEALERS, DISTRIBUTORS, AGENTS, OR EMPLOYEES, ASSUME THE ENTIRE COST OF ALL NECESSARY SERVICING, REPAIR, OR CORRECTION.

THE ABOVE IS THE ONLY WARRANTY OF ANY KIND, EITHER EXPRESS OR IMPLIED, INCLUDING BUT NOT LIMITED TO THE IMPLIED WARRANTIES OF MERCHANTABILITY AND FITNESS FOR A PARTICULAR PURPOSE, THAT IS MADE BY the author, ON THIS PRODUCT. NO ORAL OR WRITTEN INFORMATION OR ADVICE GIVEN BY the author, ITS DEALERS, DISTRIBUTORS, AGENTS OR EMPLOYEES SHALL CREATE A WARRANTY OR IN ANY WAY INCREASE THE SCOPE OF THIS WARRANTY AND YOU MAY NOT RELY ON ANY SUCH INFORMATION OR ADVICE.

NEITHER the author NOR ANYONE ELSE WHO HAS BEEN INVOLVED IN THE CREATION, PRODUCTION OR DELIVERY OF THIS PRODUCT SHALL BE LIABLE FOR ANY DIRECT, INDIRECT, CONSEQUENTIAL OR INCIDENTAL DAMAGES (INCLUDING DAMAGES FOR LOSS OF BUSINESS PROFITS, BUSINESS INTERRUPTION, LOSS OF BUSINESS INFORMATION, AND THE LIKE) ARISING OUT OF THE USE OR INABILITY TO USE SUCH PRODUCT EVEN IF the author HAS BEEN ADVISED OF THE POSSIBILITY OF SUCH DAMAGES.

3.2 **ACKNOWLEDGMENT**

BY USING THIS PRODUCT YOU ACKNOWLEDGE THAT YOU HAVE READ THIS LIMITED WARRANTY, UNDERSTAND IT, AND AGREE TO BE BOUND BY ITS' TERMS AND CONDITIONS. YOU ALSO AGREE THAT THE LIMITED WARRANTY IS THE COMPLETE AND EXCLUSIVE STATEMENT OF AGREEMENT BETWEEN THE PARTIES AND SUPERSEDE ALL PROPOSALS OR PRIOR AGREEMENTS, ORAL OR WRITTEN, AND ANY OTHER COMMUNICATIONS BETWEEN THE PARTIES RELATING TO THE SUBJECT MATTER OF THE LIMITED WARRANTY.